

MAIL BID SALE #J-44

CLOSES MARCH 31, 2011

- 1) SEND ALL BIDS TO: JIM'S COINS, 702 N. MIDVALE BLVD. B-2, MADISON, WI 53705, OR FAX #608-233-0175, OR PHONE 608-233-2118, OR EMAIL: jimcoins @sbcglobal.net
- 2) THE HIGHEST BIDDER ACKNOWLEDGED BY THE AUCTIONEER SHALL BE THE BUYER. THE AUCTIONEER RESERVES THE RIGHT TO REJECT ANY BID OR WITHDRAW ANY LOT FROM THE SALE. BIDDERS ARE RESPONSIBLE FOR THEIR OWN ERRORS, SO DOUBLE CHECK YOUR BIDS. THE FIRST POSTMARK WINS IN CASE OF A TIE BID.
- 3) ALL SALES ARE FOR CASH AND ARE PAYABLE IMMEDIATELY UPON RECEIPT OF THE INVOICE.
- 4) AUCTIONS ARE OPEN TO ALL AND NO DEPOSIT IS REQUIRED OR DESIRED.
- 5) NO UNLIMITED BIDS ARE ACCEPTED. WINNING BIDDERS WILL BE AWARDED LOT AT A 10% ADVANCE OVER THE SECOND HIGHEST BID. IF NO OTHER BIDS ARE RECEIVED FOR A LOT, THE BIDDER WILL BE AWARDED THE LOT AT THE MINIMUM BID, OR ESTIMATE IF NO MINIMUM IS GIVEN.
- 6) ALL ITEMS ARE GUARANTEED GENUINE. BIDDERS MAY RETURN ANY ITEM NOT AS DESCRIBED.
- 7) A \$1 HANDLING CHARGE WILL BE ADDED TO ALL WINNING INVOICES. BID EARLY AND BID OFTEN. THANKS! - LEN & JIM

| | | | | | | |
|----|-----------|------|---|------|----|------------|
| 1 | 1921 | DOLL | SO CALLED "ZERBE DIES" SEGS | AU58 | MB | \$195.00 |
| 2 | 1880 O | DOLL | RARE VAM-6c SSDC BOOK SAYS \$250. IN AU PCI | AU53 | MB | \$85.00 |
| 3 | 1889 | DOLL | 20% ROTATED REVERSE CCW ANACS | MS63 | MB | \$225.00 |
| 4 | 1896 | DOLL | 1/4 INCH IN FRONT OF AND ONTO CHIN ANACS | MS63 | MB | \$100.00 |
| 5 | 1892 CC | DOLL | STRUCK THRU ON CHEEK TO ABOVE EAR NW GRADING SERVICE | VF25 | MB | \$275.00 |
| 6 | 1923 | DOLL | TINY DISK CLIP 4:30 NOT NOTED ON SLAB HEAVY TONING OBERSE PCGS | MS64 | MB | \$46.00 |
| 7 | 1972 | DOLL | TYPE 2 REV IKE PCGS | MS63 | MB | \$110.00 |
| 8 | 1999 P | DOLL | SBA FLIPOVER DOUBLE STRUCK, 2ND 85% OFF CENTER 4:00 DIE STRUCK BOTH SIDES NGC | MS65 | MB | \$1,395.00 |
| 9 | 1999 P | DOLL | SBA, STRUCK 35% OFF CENTER 2:00 GEMMY NGC | MS67 | MB | \$395.00 |
| 10 | NO DATE | DOLL | SACAGAWEA TYPE 2 BLANK PLANCHET PCGS | MS63 | MB | \$75.00 |
| 11 | 2009 P | DOLL | SAC, IMPROPERLY ANNEALED PLANCHET LUSTEROUS BLACK BEAUTY NGC | MS64 | MB | \$125.00 |
| 12 | (2007) | DOLL | J.MADISON, REVERSE MISSING MANGANESE LAYER MISSING + MISSING EDGE LETTERING BRIGHT RED COPPER PCGS | MS64 | MB | \$950.00 |
| * | 13 (2009) | DOLL | NATIVE AMERICAN DOUBLE STRUCK IN COLLAR + MISSING EDGE LETTERING PCGS EX RARE ON 2009 | MS63 | MB | \$1,750.00 |
| 14 | (2009) | DOLL | NATIVE AMERICAN, MISSING EDGE LETTERING PARTIAL COLLAR STRIKE PCGS | MS64 | MB | \$950.00 |
| 15 | 2007 P | DOLL | G. WASHINGTON, REVERSE CLAD LAYER MISSING 6.02 GRAMS NGC | MS61 | MB | \$395.00 |
| 16 | 2007 | DOLL | G.WASHINGTON, MISSING EDGE LETTERING ICG | MS67 | MB | \$169.00 |
| 17 | 2007 D | DOLL | G.WASHINGTON, SINTERED PLANCHET POSITION A PCGS | MS65 | MB | \$45.00 |
| * | 18 2008 S | DOLL | J.Q.ADAMS, EXTREMELY HIGH RIM (DOUBLE PLANCHET THICKNESS) 3:00, REVERSE & EDGE LETTERING 1/2 OFF COIN NGC | PR69 | MB | \$225.00 |
| 19 | 1964 | HALF | HUGE BROADSTRIKE WITH 40% BROCKAGE AT 12:00 OBERSE PCGS LUSTROUS, WOW! | MS62 | MB | \$1,250.00 |
| 20 | (1972) | HALF | STRUCK 90% OFF CENTER 10:00 PCGS | MS63 | MB | \$295.00 |

| | | | | | | |
|----|------|--------|--|------|----|------------|
| 21 | 1969 | QUAR | STRUCK ON CENT PLANCHET 3.11 GRAMS, PRETTY IRRIDESCENT TONING NGC BRN | MS65 | MB | \$995.00 |
| * | 22 | 197(0) | QUAR STRUCK ON FOREIGN PLANCHET 2.5 GRAMS (LOOKS LIKE 1970) NGC RB | MS64 | MB | \$990.00 |
| | 23 | 1965 | QUAR STRUCK ON NICKEL PLANCHET PCGS | AU53 | MB | \$199.00 |
| | 24 | 1976 | QUAR BICENTENNIAL OBVERSE CLAD LAYER OFF BEFORE STRUCK PCGS | AU58 | MB | \$215.00 |
| | 25 | 2007 D | QUAR WYOMING, STRUCK ON ELLIPTICAL PLANCHET PCGS TOUGH 2007 ERROR | MS64 | MB | \$260.00 |
| | 26 | 2000 P | QUAR MARYLAND, MISSING OBVERSE CLAD LAYER BEFORE STRUCK NGC | MS62 | MB | \$180.00 |
| | 27 | 2000 D | QUAR NEW HAMPSHIRE, STRUCK 10% OFF CENTER 10:00, SCRATCHES REVERSE 1:00 TO 11:00 TO TOP EDGE ANACS UNC DETAILS NET | AU55 | MB | \$40.00 |
| | 28 | 2000 P | QUAR VIRGINIA, STRUCK 20% OFF CENTER 10:00 PCGS | MS63 | MB | \$95.00 |
| | 29 | (1999) | QUAR PENNSYLVANIA, STRUCK 60% OFF CENTER 4:00 NGC | MS64 | MB | \$260.00 |
| | 30 | 1941 D | DIME DOUBLED DIE OBVERSE & REVERSE FS-101 PCGS FULL BANDS | MS65 | MB | \$240.00 |
| | 31 | N.D. | DIME STRUCK 35% OFF CENTER ON ELLIPTICAL PLANCHET ROOSEVELT SUPER CUTE PCGS | MS64 | MB | \$495.00 |
| | 32 | 1950 S | DIME OVER MINT MARK S OVER D FS-501 PCGS | MS64 | MB | \$225.00 |
| | 33 | 1950 D | DIME VERY STRONG DOUBLED DIE REVERSE FS-801 ICG | MS63 | MB | \$150.00 |
| | 34 | 1950 D | DIME VERY STRONG DOUBLED DIE REVERSE FS-801 ICG | MS64 | MB | \$190.00 |
| | 35 | N.D. | NICK STRUCK 35% OFF CENTER 9:00(LOOKS BETTER GRADE THAN SAYS) BUFFALO NGC | VG08 | MB | \$449.00 |
| | 36 | 1913 | NICK STRAIGHT EDGE CLIP AT 7:00 ON TYPE 1 BUFFALO+ 20c ROTATED REV ANACS | MS62 | MB | \$189.00 |
| * | 37 | N.D. | NICK DEEP REVERSE DIE CAP NICE REVERSE BROCKAGE OBVERSE NGC | MS66 | MB | \$395.00 |
| | 38 | 1989 P | NICK STRUCK 40% OFF CENTER 11:00 PCGS | MS64 | MB | \$35.00 |
| * | 39 | 1973 D | NICK HEAVY SPLIT REVERSE DIE FROM 2:30 TO 8:30 NGC | MS63 | MB | \$195.00 |
| * | 40 | 1967 | NICK HUGE OBVERSE CUD 12:00, JNC-67-9 WOWSER NGC | AU58 | MB | \$360.00 |
| * | 41 | 1959 D | NICK OBVERSE CUD 5:00 ANACS | AU55 | MB | \$40.00 |
| * | 42 | 1961 D | NICK CLAMSHELL SPLIT ON EDGE OF 25% STRAIGHT CLIPPED PLANCHET V. UNUSUAL NGC | MS64 | MB | \$145.00 |
| | 43 | 1941 S | NICK LARGE MINT MARK URS5 9-16 KNOWN ANACS | AU53 | MB | \$80.00 |
| | 44 | 1942 D | NICK LARGE LAMINATION 9:00 UNTO CHEEK ANACS | EF40 | MB | \$35.00 |
| | 45 | 1943 P | NICK LAMINATION REVERSE 2:00 TO 6:30 ANACS | VF20 | MB | \$30.00 |
| | 46 | 1944 P | NICK LAMINATION OBVERSE APROX 2:00 TO 10:00 ANACS | AU50 | MB | \$30.00 |
| * | 47 | N.D. | NICK STRUCK 50% OFF CENTER 2:00 ON COPPER CENT PLANCHET PCGS | AU58 | MB | \$1,100.00 |
| | 48 | 2000 P | NICK DOUBLE DENOMINATION ON STRUCK CENT RARE ON ZINC CENT PCGS RED | MS64 | MB | \$995.00 |
| * | 49 | 1956 D | NICK STRUCK ON CENT PLANCHET PCGS BRN | MS63 | MB | \$495.00 |
| | 50 | 1961 D | NICK STRUCK ON CENT PLANCHET PCGS RED/BRN | MS62 | MB | \$425.00 |
| | 51 | 1962 | NICK STRUCK ON CENT PLANCHET ANACS | MS62 | MB | \$395.00 |
| * | 52 | 1962 D | NICK STRUCK ON CENT PLANCHET PCGS RED/BRN | MS64 | MB | \$410.00 |
| | 53 | 1965 | NICK STRUCK ON CENT PLANCHET PCGS | MS63 | MB | \$425.00 |
| | 54 | 1966 | NICK STRUCK ON CENT PLANCHET PCGS RED/BRN | MS64 | MB | \$395.00 |
| | 55 | 1969 D | NICK STRUCK ON CENT PLANCHET PCGS BRN | MS64 | MB | \$410.00 |
| | 56 | 1971 D | NICK STRUCK ON CENT PLANCHET PCGS RED/BRN | MS64 | MB | \$450.00 |
| | 57 | 1974 D | NICK STRUCK ON CENT PLANCHET NGC RED/BRN | MS63 | MB | \$365.00 |
| | 58 | 1975 D | NICK STRUCK ON CENT PLANCHET PCGS RED/BRN | MS64 | MB | \$395.00 |
| | 59 | 1981 D | NICK STRUCK ON DAMAGED BEFORE STRUCK CENT PLANCHET 3.1 GRAMS NGC RED/BRN | MS64 | MB | \$230.00 |

| | | | | | | | |
|----|--------|--------|--|--|------|----------|------------|
| 60 | 1999 D | NICK | STRUCK ON CENT PLANCHET RARE ON ZINC PLANCHET NGC RED | MS61 | MB | \$380.00 | |
| * | 61 | N.D. | CENT | INDIAN CENT VERY UNUSUAL LOOKS LIKE BROCKAGE + COUNTER BOCKAGE. INCUSE "ONE CENT" ON OBV ON TOP OF RAISED EXPANDED INDIAN HEAD. NOTE INDIAN FEATHER TIPS THAT RUN OFF THE EDGE OF THE COIN (HOLDER JUST SAYS STRK THRU CAP DIE) NGC BRN | VF30 | MB | \$850.00 |
| * | 62 | 1956 D | CENT | DOUBLE STRUCK, 2ND 80% OFF CENTER 5:00 UNIFACE REVERSE SUPER EXAMPLE ANACS RED | MS64 | MB | \$485.00 |
| * | 63 | 1971 S | CENT | SUPER MAJOR CUD OBVERSE 71S-2 PCGS RED/BRN RAINBOW TONE | MS62 | MB | \$595.00 |
| * | 64 | 1970 S | CENT | OBVERSE CUD #4 12:00 TO 2:30 NGC RED/BRN | MS63 | MB | \$120.00 |
| | 65 | 1944 D | CENT | D OVER S MINT MARK #2 (NOT LISTED ON HOLDER) PCGS | XF45 | MB | \$75.00 |
| | 66 | 1951 D | CENT | D OVER S OVER MINT MARK FS-512 PCGS RED | MS64 | MB | \$95.00 |
| | 67 | 1959 D | CENT | EXTRA D INSIDE 2nd 9 ANACS RED | MS65 | MB | \$145.00 |
| * | 68 | 1914 | CENT | 10% OFF CENTER 2:00 PCGS BN | MS64 | MB | \$275.00 |
| * | 69 | 1915 D | CENT | 10% OFF CENTER 1:00 NGC BN | MS62 | MB | \$275.00 |
| | 70 | 1917 D | CENT | 15% OFF CENTER 5:00 NGC BN | MS63 | MB | \$275.00 |
| | 71 | 1919 D | CENT | 15% OFF CENTER 10:00 PCGS | AU55 | MB | \$249.00 |
| | 72 | 1969 S | CENT | 80% OFF CENTER 10:30 FULL DT & MM. RED/VIOLET TONED BEAUTY PCGS RED/BN | MS62 | MB | \$215.00 |
| | 73 | 1970 D | CENT | 60% OFF CENTER 10:30 PCGS RED | MS62 | MB | \$45.00 |
| | 74 | 1973 D | CENT | 60% OFF CENTER 11:30 PCGS RED | MB | MB | \$55.00 |
| | 75 | 1919 | CENT | LAMINATION 2:00 TO 8:00 OBVERSE CORRODED- DAMAGED ANACS NET | VG | MB | \$50.00 |
| | 76 | 1920 | CENT | LAMINATIONS ACROSS OBVERSE DAMAGED ANACS NET | GD4 | MB | \$30.00 |
| | 77 | 1921 | CENT | LAMINATION DEEP 12:00 TO 6:00 REVERSE | FN15 | MB | \$30.00 |
| | 78 | 1977 | \$20 | FED RESERVE NOTE, WOWSER ONLY HALF THERE WITH PARTS OF SEALS & SER# SLANTED ACROSS REVERSE PCGS PPQ | AU58 | MB | \$1,150.00 |
| | 79 | 1974 | \$20 | F.R.NOTE, 3/16" WIDE WHITE GUTTER FOLD TOP TO BOTTOM OBVERSE PCGS | VF35 | MB | \$85.00 |
| | 80 | 1969 C | \$20 | F.R.N. 1/8" WIDE GUTTER FOLD OBV & REV SLANTED ACROSS PORTRAIT PCGS PPQ | VF35 | MB | \$65.00 |
| | 81 | 1993 | \$20 | F.R.N, FULL DARK OFFSET OBERSE ON REVERSE | FIN | MB | \$85.00 |
| * | 82 | 1988 A | \$20 | F.R.N, SPOOKY GREEN INK SMEARS ACROSS REVERSE PCGS PPQ | VF35 | MB | \$110.00 |
| * | 83 | 1969 C | \$10 | MISALIGNED SERIAL NUMBERS AND SEAL PCGS | AU55 | MB | \$210.00 |
| | 84 | 1974 | \$10 | F.R.N, SEALS AND SERIAL NUBERS ON REVERSE GEMMY PCGS PPQ | CU65 | MB | \$450.00 |
| | 85 | 1985 | \$10 | F.R.N, DARK ROUND BLACK INK SPOT OBVERSE NEAR RT TOP PCGS PPQ | VF35 | MB | \$65.00 |
| | 86 | 1977 A | \$10 | F.R.N, HUGE DARK GREEN INK BLOAT REVERSE AT TOP PCGS PPQ | AU58 | MB | \$160.00 |
| | 87 | 1988 A | \$10 | F.R.N, BLACK INK SMEAR 1 1/2" LONG TOP DOWN LEFT END | AU58 | MB | \$45.00 |
| | 88 | 1974 | \$10 | F.R.N, 15 NOTE PROGRESSION OF OFFSET REVERSE ON OBVERSE. NOTES HAVE VARYING % OF OFFSET, AND SOME NOTES DO NOT HAVE. % OF OFFSET SEEMS ALMOST RANDOM THROUGHOUT THE NOTES. VERY UNUSUAL | GEM | MB | \$950.00 |
| | 88 | 1969 C | \$10 | F.R.N, WIDELY MISALIGNED OVERPRINT ON OBVERSE PCGS PPQ | AU55 | MB | \$210.00 |
| | 89 | 1995 | \$5 | F.R.N, 3 NOTE PROGRESSION OF MOSTLY BLANK BACK PCGS PPQ | CU64 | MB | \$995.00 |
| | 90 | 1985 | \$5 | F.R.N, 3RD PRINT SEALS & NUMBERS OF REVERSE PMG | CU64 | MB | \$469.00 |
| | 91 | 1988 A | \$5 | F.R.N, WIDE BLACK BLACK INK SMEAR HALF WAY IN FROM LEFT END PCGS PPQ | CU64 | MB | \$115.00 |

| | | | | | | |
|-----|------------|------|--|------|----|----------|
| 92 | 1977 | \$5 | F.R.N, GREEN INK SMEAR TOP TO BOTTOM LEFT END | VF | MB | \$35.00 |
| 93 | 1974 | \$5 | F.R.N, WHITE GUTTER FOLD TOP TO BOTTOM RIGHT END | AU | MB | \$45.00 |
| 94 | 1969 C | \$5 | F.R.N, INSPECTORS CRAYON MARK RIGHT END SM LITE 110 BY PORTRAIT | FIN | MB | \$42.00 |
| 95 | 1935 C | \$1 | SILVER CERT, MISALIGNED REVERSE KINDA SLANTED AND 2ND NOTE 1/4" LEFT END PCGS | VF20 | MB | \$110.00 |
| 96 | 1935 E | \$1 | SILVER CERT, NICE CURVED GUTTER FOLD RIGHT END | FIN | MB | \$35.00 |
| 97 | 1993 | \$1 | F.R.N, LARGE NEAT BUTTERFLY FOLD UPPER LEFT END PCGS PPQ | AU55 | MB | \$225.00 |
| 98 | 1974 | \$1 | F.R.N, 3RD OVERPRINT SHIFTED DRAMATICLY RIGHT | EF | MB | \$260.00 |
| 100 | 1977 | \$1 | F.R.N, UNUSUAL DOUBLE FOLDOVER NEAT | EF | MB | \$560.00 |
| 101 | 1985 | \$1 | F.R.N, LARGE DARK GREEN INK SMEAR OVER 1/4 LEFT END REVERSE | EF | MB | \$95.00 |
| 102 | 1969 | \$1 | F.R.N, MISMATCHED SERIAL NUMBERS F 689 & F 679 | VF | MB | \$450.00 |
| 103 | 1969 | \$1 | F.R.N, LIGHT GREEN OFFSET REVERSE ON OBSERVE | AU | MB | \$99.00 |
| 104 | 1888 O | DOLL | DOUBLED DIE OBVERSE "HOT LIPS" | AG | MB | \$31.00 |
| 105 | 1900 O | DOLL | O OVER CC MINT MARK | VF | MB | \$45.00 |
| 106 | 1921 | DOLL | SLAG LAMINATION FRONT OIF EYES & FACE | EF | MB | \$50.00 |
| * | 107 1882 O | DOLL | STRUCK IN SLAG OVER NOSE & MOUTH ALSO SOME REVERSE | BU | MB | \$45.00 |
| * | 108 1882 S | DOLL | LAMINATION OUT BEFORE STRUCK 10:30 ACROSS GHAIR TO FOREHEAD | VF | MB | \$80.00 |
| 109 | 1885 O | DOLL | STRUCK THRU REVERSE OVER "DOLLA" | VF30 | MB | \$60.00 |
| 110 | 1888 O | DOLL | LAMINATION OUT OF EDGE 7:00 | VF | MB | \$50.00 |
| 111 | 1904 O | DOLL | SMALL LAMINATION OUT EDGE 5:00 | MS62 | MB | \$50.00 |
| 112 | 1921 | DOLL | LAMINATION STREAKS 5:00 TO 8:30 | EF | MB | \$27.00 |
| * | 113 1921 | DOLL | NEAT LAMINATION OVER 3 STARS RIGHT OF DATE | BU | MB | \$29.00 |
| * | 114 1921 | DOLL | MAJOR STRUCK THRU OBVERSE 7:00 ACROSS CHEEK TO TEMPLE NEAT | AU | MB | \$55.00 |
| 115 | 1897 O | DOLL | STRUCK THRU BOTTOM OF "UNI" TO WREATH | GD | MB | \$45.00 |
| 116 | 1888 | DOLL | STRUCK THRU TOP TO BOTTOM OF EAGLES BREAST | AU | MB | \$60.00 |
| 117 | 1894 O | DOLL | MISALIGNED DIE OBVERSE | FN | MB | \$40.00 |
| 118 | 1921 | DOLL | DISK CLIP 4:00 | EF | MB | \$65.00 |
| 119 | 1922 | DOLL | LAMINATION SLAG STREAK 6:30 ACROSS EAGLE | EF | MB | \$27.00 |
| * | 120 1922 | DOLL | REVERSE STRUCK IN RETAINED SLAG 1:00 DOWN ACROSS HEAD TO WING NICE EXAMPLE | AU | MB | \$35.00 |
| 121 | 1926 S | DOLL | LAMINATIONS OUT 8:00 ACROSS FRONT OF FACE OBVERSE | FN | MB | \$105.00 |
| 122 | 1924 | DOLL | LAMINATION 7:00 TO 3:00 VERY LIGHT OBVERSE | MS63 | MB | \$36.00 |
| 123 | 1922 | DOLL | LAMINATION OBVERSE 5:30 TO 9:00 NOT COMPLETE, STREAKS ACROSS REVERSE | MS64 | MB | \$70.00 |
| * | 124 1923 | DOLL | GOOD SIZE STRUCK THRU REVERSE ON EAGLE WING | BU | MB | \$38.00 |
| 125 | 1922 | DOLL | STRUCK THRU ACROSS WINGS REVERSE | EF | MB | \$29.00 |
| * | 126 1922 S | DOLL | STRUCK THRU 4:00 ALONG EDGE TO 22 OF DATE | VF | MB | \$30.00 |
| 127 | 1922 | DOLL | RAGGED EDGE CLIP 10:00 THRU PLANCHET | AU | MB | \$55.00 |
| 128 | 1923 | DOLL | CRACK THRU EDGE OF PLANCHET 5:00 | EF | MB | \$41.00 |
| 129 | 1924 | DOLL | RAGGED EDGE + COUPLE CRACKS THRU PLANCHET | UNC | MB | \$35.00 |
| 130 | 1922 D | DOLL | SLIGHT MISALIGNED DIE OBVERSE | AU | MB | \$31.00 |
| 131 | 1922 D | DOLL | VERY STRONG DIE CRACKS RIGHT OBVERSE | AU | MB | \$29.00 |
| 132 | N.D. | DOLL | TYPE 2 IKE CLAD PLANCHET | UNC | MB | \$110.00 |
| * | 133 1978 D | DOLL | 7% CURVED CLIP 2:00 | BU | MB | \$35.00 |

| | | | | | | | |
|-----|--------|--------|---|--|-----------|----------|----------|
| 134 | 1971 S | DOLL | DOUBLED DIE OBVERSE PUP IGWT | BU | MB | \$15.00 | |
| 135 | 1971 S | DOLL | DOUBLED DIE OBVERSE PICK UP POINT (PUP) IGWT | PRF | MB | \$15.00 | |
| 136 | 1972 | DOLL | FAKED ERROR PLANCHET BUBBLE BACK OF HEAD, DONE WITH TORCH EDUCATIONAL | EF | MB | \$2.50 | |
| * | 137 | 1994 | ASE | PROGRESSION OF 4 COINS STRUCK THRU ON DATE | BU | MB | \$50.00 |
| * | 138 | 2007 D | DOLL | G.WASHINGTON, REVERSE 20% BROCKAGE BY ANOTHER COIN DURING WAFFLE PROCESS | BU | MB | \$150.00 |
| 139 | (N.D.) | DOLL | G.WASHINGTON, WITH NO EDGE LETTERING | MS64 | MB | \$85.00 | |
| 140 | 2009 | DOLL | Z.TAYLOR, DROPPED "185" ON EDGE | BU | MB | \$25.00 | |
| 141 | 1810 | HALF | OVERLAPPING EDGE LETTERING , LIGHT GRAFFITI OBVERSE | FIN | MB | \$95.00 | |
| 142 | 1917 | HALF | RIM CLIP 5:00 + STRONG WIDE PARTIAL COLLAR ON WALKER SCRATCHES FIELD 3:00 NOT SO BAD | EF | MB | \$99.00 | |
| 143 | 1940 S | HALF | VERY WEAK OBV & REV STRIKE | AU | MB | \$30.00 | |
| * | 144 | 1942 | HALF | 2% CURVED CLIP 10:00 | VG | MB | \$22.00 |
| * | 145 | 1944 | HALF | APROX 40% STRUCK THRU HEAVY GREASE 1:00 TO 4:00 | FIN | MB | \$17.00 |
| 146 | 1955 | HALF | 5% CURVED CLIP 5:00 | AU55 | MB | \$45.00 | |
| 147 | 1958 | HALF | 4% CURVED CLIP 2:00 | VF | MB | \$18.00 | |
| * | 148 | 1958 | HALF | STRAIGHT CLIP 10:00 TO 12:00 NICE ORIGINAL TONING | BU | MB | \$55.00 |
| 149 | 1973 D | HALF | DOUBLED DIE OBVERSE OBV-003, WILES DMR-4 STILL IN MINT CELLO | BU | MB | \$45.00 | |
| 150 | 1938 | HALF | *PROOF* WLH RARE NEWLY-DISCOVERED RE-ENGRAVED RAYS. BRILLIANT CAMEO-APPEARING (NOT MENTIONED ON HOLDER) ANACS | PR64 | MB | \$850.00 | |
| * | 151 | 1964 | HALF | MAJOR RAGGED EDGE CLIP 3:00 TO 5:30 NEAT EXAMPLE | CHOICE BU | MB | \$99.00 |
| 152 | 1964 D | HALF | 5% CURVED CLIP 2:00 | UNC | MB | \$14.00 | |
| 153 | 1968 D | HALF | DISK CLIP 5:00 | MS61 | MB | \$5.00 | |
| 154 | 1971 | HALF | 10% CURVED CLIP 7:00 | UNC | MB | \$15.00 | |
| 155 | 1972 D | HALF | 3% CURVED CLIP 4:00 | BU | MB | \$6.00 | |
| * | 156 | 1973 D | HALF | 5% CURVED CLIP 8:00 + 3% CURVED CLIP 5:30 | AU | MB | \$12.00 |
| * | 157 | 1976 | HALF | 15% CURVED CLIP 9:30 TO 12:00 | AU58 | MB | \$55.00 |
| 158 | 1976 D | HALF | STRUCK THRU 197 AT 5:00 | MS62 | MB | \$20.00 | |
| 159 | N.D..D | HALF | MAJOR STRUCK THRU HEAVY GREASE OBV & REV NICE EXAMPLE CLAD | UNC | MB | \$60.00 | |
| 160 | 1967 | HALF | TRIPLE MACHINE DOUBLING REVERSE | AU | MB | \$6.50 | |
| 161 | 1941 S | QUAR | LARGE S FS-25-1941S-503 | FIN | MB | \$10.00 | |
| 162 | 1957 | QUAR | PROOF REVERSE FS-25-1957-101 TYPE 2 | VF | MB | \$6.00 | |
| 163 | 1958 | QUAR | TYPE 2 REVERSE FS-25-1958-901 | BU | MB | \$19.00 | |
| 164 | 1969 | QUAR | TYPE 2 PROOF REVERSE | AU | MB | \$9.00 | |
| 165 | 1960 | QUAR | TYPE 2 PROOF REVERSE | BU | MB | \$18.00 | |
| 166 | 1961 | QUAR | TYPE 2 PROOF REVERSE | UNC | MB | \$17.50 | |
| 167 | 1962 | QUAR | TYPE 2 PROOF REVERSE FS-25-1962-901 | AU | MB | \$15.00 | |
| 168 | 1963 | QUAR | TYPE 2 PROOF REVERSE | AU | MB | \$9.00 | |
| 169 | 1964 | QUAR | TYPE 2 PROOF REVERSE FS-25-1964-901 | AU | MB | \$9.00 | |
| 170 | 1950 D | QUAR | FS-22 D OVER S, COMES WITH SEGS TAG SAYS VF LOOKS FINE | FIN | MB | \$32.00 | |
| 172 | 1987 P | QUAR | 10% OFF CENTER 9:30 | BU | MB | \$13.00 | |
| * | 173 | 199X | QUAR | PRE STATEHOOD, 85% OFF CENTER 1:00 | BU | MB | \$29.50 |
| 174 | N.D. | QUAR | 80% OFF CENTER CHAIN STRIKE IN OLD LONESOME JOHN HOLDER | BU | MB | \$45.00 | |
| 175 | 1983 P | QUAR | UNCENTERED BROADSTRIKE | MS63 | MB | \$11.00 | |
| 176 | 1984 | QUAR | 3% CURVED CLIP 10:30 | EF | MB | \$3.00 | |
| 177 | 1965 | QUAR | 3% CURVED CLIP 1:30 | AU | MB | \$3.50 | |
| 178 | 1963 D | QUAR | 2% CURVED CLIP 1:30 | VF | MB | \$2.95 | |

| | | | | | | | |
|-----|--------|--------|---|---|------|----------|----------|
| 179 | 1934 | QUAR | DOUBLED DIE #1 FS #101 | VF | MB | \$140.00 | |
| 181 | 1967 | QUAR | VERY STRONG CLASHED DIE OBERSE & LIGHT REVERSE | SMS | MB | \$45.00 | |
| 182 | 1991P | QUAR | DIE BREAK BACK OF MINT MARK | VF | MB | \$2.00 | |
| 183 | 1991 | QUAR | VERY FAINT MINT MARK | VF | MB | \$2.00 | |
| 184 | 1945 D | QUAR | D OVER S LOOKS LIKE POLISHING DOUBLING | EF | MB | \$1.50 | |
| 185 | 1950 S | QUAR | S OVER D OVER MINT MARK | VF | MB | \$52.00 | |
| 186 | 1964 D | QUAR | DOUBLED DIE OBERSE FS# 101 | BU | MB | \$85.00 | |
| 187 | 1957 D | QUAR | UNCENTERED BROADSTRIKE WITH TOUCH OF COLLAR RARE DATE | AU | MB | \$125.00 | |
| * | 188 | 2005 D | QUAR | KS, ELLIPTICALLY CLIPPED PLANCHET 23mm WIDE NICE SHAPE | BU | MB | \$230.00 |
| * | 189 | 2005 D | QUAR | KS, ELLIPTICALLY CLIPPED PLANCHET 23mm | UNC | MB | \$210.00 |
| * | 190 | 2007 D | QUAR | UT, ELLIPTICAL CLIPPED PLANCHET | AU58 | MB | \$135.00 |
| * | 191 | 2008 P | QUAR | OK, MULTIPLE HEAVY DIE SCRACHES LOOKS LIKE WIND FROM BIRD | BU | MB | \$2.50 |
| * | 192 | 2006 P | QUAR | CO, CUD REVERSE 3:00 | BU | MB | \$15.00 |
| * | 193 | 1999 P | QUAR | CT, DOUBLE STRUCK, 2ND 55% OFF CENTER 10:00 UNIFACE REVERSE LATE STAGE DIE LIFE | BU | MB | \$249.00 |
| * | 194 | 1999 X | QUAR | GA, DOUBLE STRUCK, 2ND 70% OFF CENTER 4:00 UNIFACE REV | BU | MB | \$249.00 |
| * | 195 | 1999 P | QUAR | NJ, DOUBLE STRUCK, 2ND 80% OFF CENTER 5:30 UNIFACE REVERSE | BU | MB | \$249.00 |
| | 196 | 2000 P | QUAR | SC, 5% MISALIGNED DIE REVERSE | MS64 | MB | \$16.00 |
| | 197 | 2001 P | QUAR | KY, 3% OFF CENTER WITH PARTIAL COLLAR MAY BE MISALIGNED? | MS63 | MB | \$22.00 |
| | 198 | 2005 P | QUAR | MN, WITH EXTRA EAR LOBE DOUBLED DIE OBV? | BU | MB | \$8.00 |
| * | 199 | 2000 P | QUAR | SC, 20% OFF CENTER EXPANDED STRIKE | BU | MB | \$95.00 |
| * | 200 | 2000 P | QUAR | NH, 20% OFF CENTER 12:30 | BU | MB | \$65.00 |
| * | 201 | N.D. | QUAR | STATES TYPE 85% OFF CENTER 12:00 PART OF 2 & 000 OF DATE SHOWS++ ESOF A(M) | BU | MB | \$79.00 |
| | 202 | 1916 | DIME | OBERSE DOUBLIN CRACKED DIE FSB | EF | MB | \$25.00 |
| | 202 | 1999 P | QUAR | GA, BROADSTRIKE WITH PARTIAL COLLAR | BU | MB | \$14.00 |
| | 203 | 2005 D | QUAR | CA, UNCEN BRDSTRK WITH TILTED PART COLL | BU | MB | \$23.00 |
| | 204 | 2003 P | QUAR | IL, UNTERED BROADSTRIKE WITH SOME PARTIAL COLLAR | BU | MB | \$21.50 |
| | 205 | 2007 P | QUAR | SC,UNCENTERED BROADSTRIKE WITH PARTIAL COLLAR | BU | MB | \$16.00 |
| | 206 | 2000 P | QUAR | SC,TILTED PARTIAL COLLAR STRIKE | BU | MB | \$14.50 |
| | 207 | 1893 | DIME | AMAZING S/S/S MINT MARKS | F12 | MB | \$155.00 |
| | 209 | 1944 D | DIME | MINOR DIE CRACK 2:00 | EF45 | MB | \$3.00 |
| | 210 | 1944 | DIME | OBERSE PLANCHET FLAW 2:00 TO 4:00 | EF | MB | \$3.50 |
| * | 211 | 1930 | DIME | STRUCK THRU 1:30 TO 7:30 REVERSE | FIN | MB | \$10.00 |
| | 213 | 1940 D | DIME | RPM #2 | BU | MB | \$24.00 |
| | 214 | 1940 S | DIME | RPM # 1 | EF | MB | \$9.50 |
| | 215 | 1941 D | DIME | RPM # 1 | VG | MB | \$5.00 |
| | 216 | 1941 S | DIME | RPM # 1b FS-10-1941 S-501 | FIN | MB | \$6.00 |
| | 217 | 1945 D | DIME | RPM # 1 | AU | MB | \$11.50 |
| | 218 | 1948 S | DIME | RPM # 3 | VF | MB | \$6.00 |
| | 219 | 1952 S | DIME | RPM # 1 | FIN | MB | \$5.50 |
| | 220 | 1953 D | DIME | RPM #1 | VG | MB | \$5.00 |
| | 221 | 1953 S | DIME | RPM # 1 | VF | MB | \$6.00 |
| | 222 | 1958 D | DIME | RPM # 1 | UNC | MB | \$9.00 |
| | 223 | 1960 D | DIME | RPM # 1 | VF | MB | \$5.00 |
| | 224 | 1964 D | DIME | RPM # 2 | AU | MB | \$7.00 |
| | 225 | 1946 | DIME | DOUBLED DIE OBERSE 4-O-V FS-102 | BU | MB | \$55.00 |
| | 226 | N.D. | DIME | CLAD TYPE 2 PLANCHET | UNC | MB | \$2.50 |
| * | 227 | 1964 D | DIME | CUD OBERSE TOP OF HEAD RDC-64DD-1A | AU | MB | \$49.00 |
| | 228 | 1974 | DIME | OBERSE CLAD LAYER OFF BEFORE STRUCK | AU | MB | \$30.00 |

SUBSCRIPTION FOR THE YEAR 2011
DON'T MISS ANY OF THESE SALES!

SEMI-MONTHLY ERROR CATALOGS PUBLISHED FOR THE PAST 23 YEARS!

THE SUBSCRIPTION PRICE IS \$8.00 FOR SIX CATALOGS ON A SEMI-MONTHLY BASIS. COST OF PRINTING AND MAILING THE LAST CATALOG WAS \$2.06 EACH. WE DON'T MIND SENDING CATALOGS TO COLLECTORS OF CATALOGS IF YOU SHARE IN THE COST OF THE CATALOGS.

WE WILL AUTOMATICALLY BILL \$8.00 SUBSCRIPTION DUES TO ALL WINNING BIDERS WHO HAVE NOT YET PAID UNLESS OTHERWISE PAID OR INFORMED.

WE HAVE A FULL SERVICE COIN & STAMP STORE THAT IS LOCATED IN HILLDALE MALL IN MADISON, WI. PLEASE FEEL FREE TO STOP BY IF YOU ARE IN TOWN.

WE ARE ALSO ENTHUSIASTIC BUYERS OF ALL ERRORS AS WELL AS NORMAL COINS, STAMPS AND COLLECTIBLE RED/BLUE BOOKS!

PLEASE VISIT OUR WEB SITE AT www.Jimscoins.com MANY OF THE PHOTOS IN THE WEB SITE VERSION ARE *FULL COLOR*.

NEW PROGRAM: FREE CONECA MEMBERSHIP UPON REQUEST FOR NEW MEMBERS WITH WINNING BIDS TALLING \$50 OR MORE.

CONSIGNORS: GETTING TOUGHER TO FIND ERRORS TO FILL THE AUCTIONS. IF YOU HAVE SOME TO SELL OR CONSIGN, PLEASE LET US KNOW. TERMS ARE 15% COMMISSION, YOU SET THE MINIMUM BID AND NO CHARGE IF THE COIN DOES NOT SELL. ALSO BID GENEROUSLY SO WE CAN AFFORD TO BUY SOME MORE. HEH-HEH. -LEN & JIM

NOTES FOR J-44: CONGRATULATIONS PACKERS, SUPER BOWL CHAMPIONS ONCE AGAIN! FOR ALL YOU PACKER FANS, CELEBRATE AND REWARD YOURSELVES BY PICKING UP SOME FUN ERRORS. AND FOR YOU STEELER FANS, DON'T GET DOWN, BOUNCE RIGHT BACK BY BIDDING STRONG AND BEING THE CHAMPION BIDDER ON SOME ERRORS! HAVE FUN! -LEN & JIM

NAME _____

ADDRESS _____

CITY _____ STATE _____ ZIP _____

PHONE (OPTIONAL) _____

YOUR ADDRESS LABEL HAS A YEAR ON IT SO YOU WILL KNOW WHEN YOUR SUBSCRIPTION EXPIRES.

THANKS AGAIN TO ALL OF YOU! -LEN & JIM

| | | | | | | | |
|-----|--------|--------|--|--|-----|----------|------------|
| 229 | 1985 P | DIME | MISALIGNED OBERSE DIE | MS63 | MB | \$10.00 | |
| 230 | 1993 O | DIME | MISALIGNED OBERSE DIE | FIN | MB | \$3.00 | |
| 231 | 1996 P | DIME | PARTIAL COLLAR STRIKE | MS63 | MB | \$8.00 | |
| 232 | 199X | DIME | 25% OFF CENTER 3:00 | MS63 | MB | \$9.00 | |
| * | 233 | 1966 | DIME | 35% OFF CENTER 1:00 | BU | MB | \$45.00 |
| 234 | 1995 P | DIME | CENTERED BROADSTRIKE LARGER THAN CENT | BU | MB | \$10.00 | |
| 235 | 1995 P | DIME | CENTERED BROADSTRIKE CENT SIZE | BU | MB | \$7.00 | |
| * | 236 | 1996 P | DIME | LARGE BROADSTRIKE & SOME REEDING COMING OFF MULTI STRIKE NO ROTATION | BU | MB | \$32.00 |
| 237 | 1964 | DIME | 3% CURVED CLIP 2:30 | UNC | MB | \$2.50 | |
| 238 | 1964 D | DIME | 7% CURVED CLIP 1:00 | MS63 | MB | \$5.00 | |
| * | 239 | 1965 | DIME | 20% CURVED CLIP 10:30 | AU | MB | \$9.00 |
| * | 240 | 196X | DIME | 32% CURVED CLIP 3:00 | UNC | MB | \$18.00 |
| 241 | 1869 | NICK | 20% OFF CENTER 8:00 PART OF DATE SHOWS | VG | MB | \$499.00 | |
| 242 | 1868 | NICK | RIM CLIP 8:30 | GD | MB | \$20.00 | |
| 243 | 1883 | NICK | NO CENTS TYPE, DISK CLIP 11:30 + DIE CRACKS | AU | MB | \$22.00 | |
| 244 | 1909 | NICK | LOST LAMINATION BEFORE STRIKE | GD | MB | \$4.00 | |
| 245 | 1910 | NICK | WIDE LAMINATION OBERSE 1:00 TO 6:30 | GD | MB | \$7.00 | |
| 246 | 1920 D | NICK | 30 DEGREE ROTATED REVERSE | AG | MB | \$3.00 | |
| 247 | 1937 | NICK | RIM CUD 8:00 TO 9:00 REVERSE | VF30 | MB | \$7.00 | |
| 248 | 1920 S | NICK | DIE CLASH OBERSE UNDER CHIN + LAMINATION REVERSE | GD | MB | \$4.00 | |
| 249 | 1921 | NICK | TWO FEATHERS FS-05-1921-401 | VG | MB | \$15.00 | |
| 250 | 1935 | NICK | DOOBLED DIE REV 1-R-V FS-05-1935-801 | FN+ | MB | \$105.00 | |
| 251 | 1937 D | NICK | RPM # 1a | VF | MB | \$9.00 | |
| 252 | 1938 D | NICK | RPM # 2 D OVER D | FIN | MB | \$5.50 | |
| 253 | 1943 | NICK | DOUBLE DIE | VG | MB | \$15.00 | |
| 254 | 1934 D | NICK | STRUCK THRU ON "CE" OF CENT REVERSE | FN | MB | \$3.00 | |
| 255 | N.D. | NICK | STRUCK THRU GREASE OVER DATE AREA | FN15 | MB | \$6.00 | |
| * | 256 | 1989 P | NICK | QUARTER SIZE CENTERED BROADSTRIKE | BU | MB | \$15.00 |
| 257 | N.D. | NICK | COUNTER BROCKAGE HUGE JEFFERSON HEAD OBERSE SLIGHT COUNTING WHEEL MARK | BU | MB | \$280.00 | |
| * | 258 | 1941 | NICK | STRUCK ON STRUCK CENT LINCOLNS BEARD ON JEFFS CHEEK + RE WHEAT STAKS ABOVE DOME SUPER RARE | EF | MB | \$1,600.00 |
| * | 259 | 1964 | NICK | STRUCK ON CENT PLANCHET | AU | MB | \$265.00 |
| * | 261 | 1976 D | NICK | STRUCK ON CENT PLANCHET | UNC | MB | \$350.00 |
| * | 262 | 1983 | NICK | STRUCK ON CENT PLANCHET RARE ON ZINC | BU | MB | \$450.00 |
| 263 | 1913 | NICK | TYPE 1, LAMINATION + DOUBLE RIM2:00 TO 4:00 | AU58 | MB | \$30.00 | |
| 264 | 1916 D | NICK | LAMINATION FLAP FOLED OVER ON FOREHEAD | VF | MB | \$31.00 | |
| 265 | 1927 | NICK | SPLIT OFF BEFORE STRUCK 4:00 TO 11:00 | VG | MB | \$17.00 | |
| 266 | 1931 S | NICK | LARGE LAM REV ACROSS BUFFALO BETTER DATE | FIN | MB | \$12.00 | |
| 267 | 1938 D | NICK | LAMINATION OBERSE 5:00 | MS60 | MB | \$15.00 | |
| 268 | 1939 D | NICK | LAMINATION STREAK ABOVE DOME REVERSE | FIN | MB | \$7.00 | |
| 269 | 1959 D | NICK | LAMINATION STREAK 2:30 TO 7:00 REVERSEVF | MB | MB | \$0.50 | |
| 270 | 1943 P | NICK | LAMINATION OBERSE 4:30 TO 7:30 | VG | MB | \$2.00 | |
| 270 | 1964 D | NICK | STRUCK ON CENT PLANCHET LIGHTLY CLEANED | UNC | MB | \$245.00 | |
| 271 | 1944 P | NICK | LAMINATIONS REVERSE 1:00 TO 6:30 | FIN | MB | \$2.00 | |
| 272 | 1944 P | NICK | MAJOR LAMINATION 2:00 TO 10:00 REVERSE | VF | MB | \$5.00 | |
| 273 | 1940 S | NICK | DOUBLE S MINT MARK + LAMINATION 6:30 | VF | MB | \$12.00 | |
| 274 | N.D. | NICK | TYPE 2 BLANK PLANCHET | UNC | MB | \$2.00 | |
| 275 | 1995 P | NICK | CENTERED BROADSTRIKE FULL STEPS | MS63 | MB | \$6.00 | |
| 276 | 1964 | NICK | 7% CURVED CLIP 11:00 DARKLY TONED | AU | MB | \$1.00 | |
| 277 | 1968 D | NICK | STRUCK THRU HEAVY GREASE | MS64 | MB | \$37.00 | |
| 278 | 1981 P | NICK | MISALIGNED DIE OBERSE 5% | MS63 | MB | \$8.00 | |
| * | 279 | 1957 D | NICK | RIM CLIP 1:00 ++ 5% CURVED CLIP 10:00 | EF | MB | \$4.50 |

| | | | | | | |
|-----|------------|------|--|------|----|------------|
| 280 | 1958 D | NICK | 2% CURVED CLIP 5:30 + 3% CURVED CLIP 11:30 | VF | MB | \$6.00 |
| 281 | 1960 | NICK | RIM CLIPS AT 12:00 & 7:00 | UNC | MB | \$3.50 |
| 282 | 1962 D | NICK | 2 RIM CLIPS AT 4:30 % 10:30 | EF | MB | \$2.00 |
| 283 | 1964 | NICK | DISK CLIP 5:00 & RIM CLIP 11:00 | EF | MB | \$2.50 |
| 284 | 1964 D | NICK | 3% CURVED CLIP 9:30 | EF | MB | \$2.50 |
| 285 | 1964 D | NICK | RIM CLIP 6:30 | AU | MB | \$2.00 |
| 286 | 1970 S | NICK | 6% CURVED CLIP 6:00 | UNC | MB | \$2.50 |
| 287 | 1972 D | NICK | 3% CURVED CLIP 3:30 | AU | MB | \$1.00 |
| * | 288 ND | NICK | ND NICKEL STRUCK ON CENT WITH STRUCK IN LARGE RETAINED SLIVER OF SILVER ON HEAD | AU | MB | 395.00 |
| 289 | ASST | NICK | 9 NICKELS MARKED AS REPUNCHED MMS ?? | ASST | MB | \$4.50 |
| * | 290 1949 D | NICK | 10% OFF CENTER 3:00 SCARCE DATE | CHAU | MB | \$245.00 |
| * | 291 1949 S | NICK | 10% OFF CENTER 8:00 ANOTHER SCARCE DATE | CHAU | MB | \$245.00 |
| 292 | 1968 S | NICK | 5% OFF CENTER 4:00 LIGHT REVERSE SCARTCH | AU | MB | \$120.00 |
| * | 293 1972 | NICK | 55% OFF CENTER 11:00 | BU | MB | \$45.00 |
| 294 | N.D. | NICK | 80% OFF CENTER 4:30 UNIFACE REVERSE | BU | MB | \$10.00 |
| 295 | 1832 | H10c | NICE RETAINED CUD REVERSE 8:30 TO 11:00 UNLISTED CHOICE COIN | EF | MB | \$160.00 |
| * | 296 1853 | CENT | 5% CURVED CLIP 10:00 | VF | MB | \$45.00 |
| * | 297 1853 | CENT | SLIGHTLY MISALIGNED DIE OBERSE | VF | MB | \$95.00 |
| 298 | 1852 | CENT | 37 DEGREE ROTATED REVERSE | VF | MB | \$40.00 |
| 299 | 1814 | CENT | 10% MISALIGNED DIE REV 1:00 + TAPERED RIM CLIP REV?? | AG | MB | \$49.00 |
| 300 | 1863 | CENT | REATINED CUD REVERSE 8:00 TO 10:30 | MS61 | MB | \$95.00 |
| * | 301 1897 | CENT | 10% CURVED CLIP | VF | MB | \$22.00 |
| 302 | 1858SL | CENT | LAMINATION FLAP ATTACHED REV 3:00 TO 4:00 | VG | MB | \$42.00 |
| * | 303 1980 | CENT | DOUBLE DENOMINATION FLIPOVER CENT ON STRUCK DIME LOTS OF DETAILS FROM BOTH CENT AND DIME, TWO DATES, NICE! | BU | MB | \$995.00 |
| 304 | 1882 | CENT | LAMINATION OBERSE ON MOUTH & FIELD | GD | MB | \$4.00 |
| 305 | ASST | CENT | 9 INCH BOX OFF CENTER CENTS 1959 TO 2001-P&D, ALL DIFFERENT, COMPLETE SET 93 COINS MISSING ONLY 1960P, 1973S 1974S, ALMOST ALL ARE BU 30-70%, 1969 P IS UNCENTERED BROADSTRIKE | ASST | MB | \$2,300.00 |
| 306 | ASST | CENT | BOX 70 DIFFERENT DATE/ MINT MARK ERRORS WHEAT CENTS NICE ASSORTMENT | ASST | MB | \$35.00 |
| 307 | ASST | CENT | 15 MINOR MINT ERRORS, DIE CHIPS, ETC CENTS & NICKELS | ASST | MB | \$5.00 |
| 308 | ASST | CENT | 11 CENT ERRORS, STRK THRU, LAMINATIONS, DIE CHIPS ETC | ASST | MB | \$3.50 |
| 309 | ASST | CENT | 10 LAMINATIONS IN 2X2 HOLDERS | ASST | MB | \$4.50 |
| 310 | 1955 | CENT | 10 COINS WITH SHIFTED 5 POORMANS DOUBE DIE | VF | MB | \$2.00 |
| 311 | ASST | CENT | 6 COINS WITH SMALL LAMINATIONS WHEAT CENTS | ASST | MB | \$1.50 |
| 312 | 1995 | CENT | 9 COINS WITH MINOR CLASHED DIES | BU | MB | \$6.50 |
| 313 | ASST | CENT | 10 COINS WHEAT CENTS WITH MONOR LAMINATIONS | ASST | MB | \$3.50 |
| 314 | ASST | CENT | 10 COINS WHEAT BACKS WITH BIE DIE BREAKS | VF | MB | \$6.50 |
| 315 | ASST | CENT | 5 COINS WHEAT BACKS WITH DIE CHIPS | EF | MB | \$1.50 |
| * | 316 N.D. | CENT | TYPE 1 COPPER BLANK WITH 50% CURVED CLIP + 5% & 3% CURVED CLIPS | UNC | MB | \$45.00 |
| 317 | N.D. | CENT | TYPE 1 BLANK WITH 30% CURVED CLIP + 2 RIM CLIPS | UNC | MB | \$39.00 |
| * | 318 N.D. | CENT | TYPE 2 PLANCHET WITH 10%+ STRAIGHT CLIP | UNC | MB | \$35.00 |
| 319 | N.D. | CENT | TYPE 2 COPPER COATED ZINC PLANCHET | UNC | MB | \$0.50 |
| 320 | N.D. | CENT | TYPE 1 UNPLATED ZINC BLANK | BU | MB | \$3.00 |
| 321 | N.D. | CENT | TYPE 2 UNPLATED ZINC PLANCHET | BU | MB | \$3.00 |
| * | 322 1966 | CENT | STRUCK ON DIME PLANCHET | AU | MB | \$265.00 |

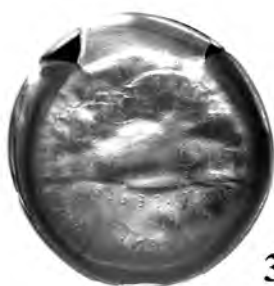
| | | | | | | |
|-------|---------|------|--|------|----|----------|
| * 323 | N.D. | CENT | QUARTER SIZE SHALLOW REVERSE CAP REV BROCKAGE ON OBV PLANCHET CRACK ON EDGE | BU | MB | \$95.00 |
| * 324 | 2004 D | CENT | DOUBLE STRUCK, 2ND 85% OFF CENTER 1:30 UNIFACE OBVERSE SUPER RARE 2004 D COIN | CHBU | MB | \$210.00 |
| 325 | 1934 D | CENT | RIM CUDS REVERSE 9:00,10:30, 1:00 | FN15 | MB | \$1.00 |
| 326 | 1914 | CENT | CUD REVERSE TO TOP OF U 1:00 | VG | MB | \$3.00 |
| 327 | 1924 D | CENT | PARTIAL COLLAR WITH HIGH FLANGED RIMGD | GOOD | MB | \$37.00 |
| 328 | 1955 S | CENT | STRUCK THRU GREASE OBVERSE & REVERSE RED | MS63 | MB | \$6.00 |
| 329 | 1994 | CENT | BIE DIE BREAK | BU | MB | \$2.00 |
| 330 | 1986 | CENT | NICE OBVERSE DIE CLASH JAILHOUSE | BU | MB | \$2.50 |
| 331 | 1983 | CENT | TILTED PARTIAL COLLAR | BU | MB | \$1.00 |
| 332 | 1983 | CENT | WITH NUBBLED SURFACES | UNC | MB | \$0.50 |
| 333 | 2000 | CENT | STRUCK WITH HEAVILY GREASE FILLED OBV AROUND AND OVER DATE | UNC | MB | \$2.00 |
| 334 | 1953 S | CENT | DIE CHIP TOP OF 5 | VF | MB | \$0.25 |
| 335 | 1922 D | CENT | 3% CURVED CLIP 4:30 SEMI KEY DATE | EF | MB | \$39.00 |
| 336 | 1940 | CENT | RIM CLIP 9:30 | VF | MB | \$0.50 |
| 337 | 1941 | CENT | 5% CURVED CLIP 8:00 | FIN | MB | \$1.50 |
| * 338 | 1941 | CENT | 5% CURVED CLIP 1:30 | FIN | MB | \$1.50 |
| * 339 | 1955 | CENT | 5% CURVED CLIP 10:00 | VF | MB | \$1.00 |
| * 340 | 1957 D | CENT | 10% CURVED CLIP 8:30 | VF | MB | \$2.50 |
| 341 | 1972 | CENT | 5% CURVED CLIP 4:30 SPOT REVERSE | BU | MB | \$1.50 |
| 342 | 1972 D | CENT | NICE 3% CURVED CLIP 7:00 COUPLE SPOTS OBV | UNC | MB | \$0.50 |
| 343 | 1910 | CENT | LAMINATION OUT OVER C OF CENT REVERSE | FIN | MB | \$2.50 |
| 344 | 1917 | CENT | NICE LAMINATION STREAK 6:00 TO 11:30 | VG | MB | \$7.00 |
| 345 | 1918 | CENT | LAMINATION OFF EDGE 1:00 TO 3:30 | FIN | MB | \$2.50 |
| 346 | 1919 | CENT | LAMINATION PEEL ON LINCOLN'S COLLAR | EF | MB | \$1.00 |
| 347 | 1919 | CENT | WIDE LAMINATION 2:30 TO 8:00 REVERSE | VF | MB | \$0.50 |
| 348 | 1920 S | CENT | LAMINATION PEELS 12:30 TO 7:00 | FIN | MB | \$2.50 |
| 349 | 1921 S | CENT | SEVERE LAM 7:30 TO 10:30 TO LFT EDGE REV | VF | MB | \$7.00 |
| 350 | 1924 | CENT | LAMINATION EGE 1:00 TO 2:00 OBVERSEF | FIN | MB | \$0.50 |
| 351 | 1924 | CENT | LAMINATION PEEL 2:00 TO 6:00VG | M | MB | \$0.50 |
| 352 | 1936 | CENT | SEVERE LAMINATIONS 5:00 TO 10:00 REVERSE | VG | MB | \$1.50 |
| 353 | 1937 D | CENT | LAMINATION PEEL IN FIELD 3:00 | VG | MB | \$0.50 |
| 354 | 1939 S | CENT | LAMINATIONS 8:00 | VF25 | MB | \$1.00 |
| 355 | 1942 | CENT | LOST PLANCHET STRIPS 2:00 TO 8:00 | VG | MB | \$1.50 |
| 356 | 1944 | CENT | LAMINATION OBVERSE 3:00 TO 10:30 | VF | MB | \$0.50 |
| 357 | 1944 D | CENT | LAMINATION PEEL 4:30 TO CHIN OBVERSE | AU | MB | \$0.50 |
| 358 | 1944 D | CENT | LAMINATION TOP OF HEAD OBVERSE | BU | MB | \$1.00 |
| 359 | 1945 D | CENT | STRUCK THRU AT DATE rea | VF | MB | \$0.50 |
| 360 | 1945 s | CENT | LAMINATION FLAP 5:00 REVERSE | VF | MB | \$0.50 |
| 361 | 1947 S | CENT | LAMINATION 4:00 TOWARDS 6:00 OBVERSE | VF | MB | \$0.50 |
| 362 | 1950 | CENT | LAMINATION 2:00 TO 9:30 OBVERSE | VF | MB | \$0.50 |
| 363 | 1955 | CENT | SEVERAL LAMINATIONS OBVERSE TOP | VF | MB | \$0.50 |
| 364 | 1955 | CENT | LAMINATION FRONT OF FACE | AU | MB | \$0.50 |
| 365 | 1958 | CENT | LIGHT LAMINATION OBVERSE | BU | MB | \$0.50 |
| * 366 | 1958 D | CENT | LAMINATION OUT 9:00 REVERSE | VF | MB | \$0.50 |
| * 367 | 1958 D | CENT | LAMINATION NICE WIDE 2:00 TO 5:00 | VF | MB | \$3.50 |
| 368 | 1961 D | CENT | LAMINATION OUT OVER LETTERS 1:30 | AU | MB | \$0.50 |
| 369 | 1964 | CENT | LAMINATION STREAKS ACROSS OBV 2:00 TO 7:00 | BU | MB | \$0.50 |
| 370 | 1919 S | CENT | MISALIGNED DIE OBVERSE | GD | MB | \$3.00 |
| 371 | 1909VDB | CENT | FILLED DIE NO L IN LIBERTY | VG10 | MB | \$12.00 |
| 372 | 1926 | CENT | DOUBLE RIM 2:00 REVERSE | AU | MB | \$4.00 |
| 373 | 1972 D | CENT | NO VDB BREEN #2268 | CHAU | MB | \$2.50 |
| 374 | 1954 D | CENT | RPM D/D/D FS# 21,76 | UNC | MB | \$4.00 |
| 375 | 1957 D | CENT | RPM D OVER D SOUTH | AU | MB | \$0.50 |

| | | | | | | |
|-----|--------|------|--|------|----|----------|
| 376 | 1936 | CENT | DOUBLED DIE OBVERSE 3-O-V FS-01-1936-103 | VF | MB | \$25.00 |
| 376 | 1936 | CENT | DOUBLED DIE OBVERSE 3-O-V FS-01-1936-103 | VF | MB | \$25.00 |
| 377 | 1941 | CENT | DOUBLED DIE OBVERSE 2-O-1 FS-01-1941 | VG+ | MB | \$20.00 |
| 377 | 1941 | CENT | DOUBLED DIE OBVERSE 2-O-1 FS01-1941-102 | VG+ | MB | \$20.00 |
| 378 | 1944 D | CENT | OVER MINT MARK #1 FS-01-1944D-501 | VF | MB | \$150.00 |
| 379 | 1944 D | CENT | D OVER S OVER MINT MARK #2 FS-01-1944D-502 | VF+ | MB | \$45.00 |
| 380 | 1952 D | CENT | D OVER S OVER MINT MARK #1 FS-01-1952D-501 | FN+ | MB | \$20.00 |
| 381 | 1955 D | CENT | DOUBLED DIE OBVERSE I-O-IV+VIII | VF | MB | \$10.00 |
| 382 | 1956 D | CENT | RPM #8 FS-01-1956D-501 | VF | MB | \$22.50 |
| 383 | 2009 P | CENT | DOUBLED DIE REVERSE WDDR 003 | BU | MB | \$5.50 |
| 384 | 1912 S | CENT | RPM #1 | FIN | MB | \$65.00 |
| 385 | 1918 D | CENT | RPM #1 | FIN | MB | \$55.00 |
| 386 | 1925 S | CENT | RPM #1 DAMAGE CUT INTO EDGE 2:00 | FIN | MB | \$2.50 |
| 387 | 1925 S | CENT | RPM #2 | VG | MB | \$6.00 |
| 388 | 1925 S | CENT | RPM #3 | G/F | MB | \$6.00 |
| 389 | 1927 D | CENT | RPM #1 FS-01-1927D-501 | EF | MB | \$27.50 |
| 390 | 1928 S | CENT | RPM #1 | F/VF | MB | \$18.00 |
| 391 | 1934 D | CENT | RPM #1 | VF | MB | \$6.00 |
| 392 | 1934 D | CENT | RPM #2 STAGE C | VF | MB | \$6.00 |
| 393 | 1934 D | CENT | RPM #3 | VG | MB | \$4.00 |
| 394 | 1934 D | CENT | RPM #4 | GD | MB | \$3.00 |
| 395 | 1935 D | CENT | RPM #3 | FIN | MB | \$4.00 |
| 396 | 1938 S | CENT | RPM #2 FS-01-1938S-502 | VG+ | MB | \$2.00 |
| 397 | 1939 D | CENT | RPM #1 | FN | MB | \$2.50 |
| 398 | 1939 S | CENT | RPM #1 | VF | MB | \$3.00 |
| 399 | 1939 S | CENT | RPM #2 | VF | MB | \$2.75 |
| 400 | 1940 D | CENT | RPM #2 | VF | MB | \$2.25 |
| 401 | 1943 D | CENT | RPM #7 | EF | MB | \$8.50 |
| 402 | 1944 D | CENT | RPM #1 | AU | MB | \$4.50 |
| 403 | 1944 D | CENT | RPM #2 | AU | MB | \$5.50 |
| 404 | 1944 D | CENT | RPM #8 | FN+ | MB | \$2.25 |
| 405 | 1944 D | CENT | RPM #10 | VF | MB | \$3.50 |
| 406 | 1944 D | CENT | RPM #13 | AU | MB | \$3.75 |
| 407 | 1944 S | CENT | RPM #1 | VF | MB | \$2.50 |
| 408 | 1944 S | CENT | RPM #3 | FN | MB | \$2.00 |
| 409 | 1945 D | CENT | RPM #1 | VF | MB | \$2.50 |
| 410 | 1945 D | CENT | RPM #4 | VF | MB | \$2.25 |
| 411 | 1945 D | CENT | RPM #5 | AU | MB | \$3.50 |
| 412 | 1946 D | CENT | RPM #1 | EF | MB | \$3.00 |
| 413 | 1946 D | CENT | RPM #17 | EF | MB | \$3.00 |
| 414 | 1947 D | CENT | RPM #1 | VF | MB | \$2.25 |
| 415 | 1948 D | CENT | RPM \$5 | VF | MB | \$2.25 |
| 416 | 1948 S | CENT | RPM #1 | VF+ | MB | \$2.25 |
| 417 | 1948 S | CENT | RPM #3 | VF | MB | \$2.25 |
| 418 | 1950 D | CENT | RPM #1 | EF | MB | \$3.00 |
| 419 | 1950 S | CENT | RPM #2 | VF+ | MB | \$2.75 |
| 420 | 1950 S | CENT | RPM #3 | VF | MB | \$2.25 |
| 421 | 1950 S | CENT | RPM #4 | EF | MB | \$2.75 |
| 422 | 1951 D | CENT | RPM #2 | FN | MB | \$2.00 |
| 423 | 1951 D | CENT | RPM #3 | EF | MB | \$2.75 |
| 424 | 1951 S | CENT | RPM #8 | FN+ | MB | \$2.25 |
| 425 | 1951 S | CENT | RPM #11 | VF | MB | \$2.50 |
| 426 | 1952 D | CENT | RPM #3 | EF | MB | \$2.25 |
| 427 | 1952 D | CENT | RPM #6 | EF | MB | \$2.75 |
| 428 | 1952 D | CENT | RPM #12 | EF | MB | \$2.75 |
| 429 | 1952 D | CENT | RPM #15 WRPM #16 | VF+ | MB | \$15.00 |
| 430 | 1952 D | CENT | RPM #23 | AU | NB | \$4.00 |

| | | | | | | | |
|-------|--------|------|--|--|-----|----|----------|
| 431 | 1952 S | CENT | RPM #5 | | FN | MB | \$2.00 |
| 432 | 1952 S | CENT | RPM #10 | | VF | MB | \$2.25 |
| 433 | 1953 D | CENT | RPM #1 | | FN | MB | \$2.50 |
| 434 | 1953 D | CENT | RPM #1 FS-01-1953 D-501 | | VF | MB | \$3.50 |
| 435 | 1953 D | CENT | RPM #1 FS-01-1953D-501 | | EF | MB | \$5.00 |
| 436 | 1953 D | CENT | RPM #2 STAGE A | | FN | MB | \$2.25 |
| 437 | 1953 D | CENT | RPM #2 | | EF | MB | \$4.00 |
| 438 | 1953 D | CENT | RPM # 6 | | VF | MB | \$2.50 |
| 439 | 1953 D | CENT | RPM #11 | | FN+ | MB | \$2.25 |
| 440 | 1953 S | CENT | RPM #3 | | VF | MB | \$2.50 |
| 441 | 1953 S | CENT | RPM #4 | | FN | MB | \$1.75 |
| 442 | 1935 S | CENT | RPM #5 STAGE E | | VF | MB | \$2.25 |
| 443 | 1935 S | CENT | RPM #6 STAGE C | | VG | MB | \$1.50 |
| 444 | 1953 S | CENT | RPM #13 | | FN | MB | \$1.75 |
| 445 | 1953 S | CENT | RPM #19 | | EF | MB | \$2.50 |
| 446 | 1954 D | CENT | RPM #1 | | FN | MB | \$2.00 |
| 447 | 1954 D | CENT | RPM #1 | | EF | MB | \$4.00 |
| 448 | 1954 D | CENT | RPM #2 | | FN | MB | \$1.75 |
| 449 | 1954 S | CENT | RPM #1 | | VF+ | MB | \$2.50 |
| 450 | 1954 S | CENT | RPM #2 | | EF | MB | \$2.75 |
| 451 | 1955 D | CENT | RPM #4 | | FN | MB | \$1.75 |
| 451 | 1954 S | CENT | RPM #3 | | VF+ | MB | \$2.50 |
| 452 | 1955 D | CENT | RPM #11 | | VF | MB | \$2.25 |
| 452 | 1954 S | CENT | RPM #4 STAGE j | | VF | MB | \$2.25 |
| 453 | 1956 D | CENT | RPM #1 | | VF | MB | \$3.50 |
| 453 | 1954 S | CENT | RPM #10 | | EF | MB | \$2.75 |
| 454 | 1956 D | CENT | RPM #3 | | VF | MB | \$2.00 |
| 454 | 1955 D | CENT | RPM #2 | | EF | MB | \$2.75 |
| 455 | 1956 D | CENT | RPM #4 | | VF | MB | \$2.75 |
| 456 | 1956 D | CENT | RPM #6 | | VF | MB | \$2.00 |
| 457 | 1956 D | CENT | RPM #8 | | VF | MB | \$24.00 |
| 458 | N.D. | CENT | 3 3/4 X 3 INCH PIECE PUNCHED STEEL CENT STRIP NICE ORIGINAL | | UNC | MB | \$33.00 |
| 459 | N.D. | CENT | 3 3/4 x 3 INCH PIECE PUNCHED STEEL CENT STRIP REPROCESSED TO SHINY NEW | | UNC | MB | \$33.00 |
| 460 | N.D. | CENT | 3 3/4 x 4 INCH PIECE PUNCHED STEEL STRIP REPROCESSED | | UNC | MB | \$35.00 |
| * 461 | 1944 | CENT | 10% OFF CENTER 9:30 | | VG | MB | \$12.00 |
| * 462 | 1964 | CENT | 13% OFF CENTER 6:00 | | UNC | MB | \$15.00 |
| * 463 | 1966 | CENT | 20% OFF CENTER 8:00 RED | | BU | MB | \$24.00 |
| 464 | 1966 | CENT | 15% OFF CENTER 1:00 | | AU | MB | \$15.00 |
| * 465 | 1969 D | CENT | 55% OFF CENTER 8:00 RED/BN | | UNC | MB | \$16.00 |
| 466 | N.D. | CENT | 40% OFF CENTER 3:00 1960's STYLE BUST | | AU | MB | \$4.00 |
| * 467 | 1982 | CENT | SM. DATE COPPER, 25% OFF CENTER 11:00 | | BU | MB | \$55.00 |
| * 468 | 1982 | CENT | LGE DATE COPPER, 65% OFF CENTER9:30 | | BU | MB | \$12.00 |
| 469 | 1982 | CENT | LGE DATE COPPER, 60% OFF CENTER8:30 | | AU | MB | \$12.00 |
| * 470 | 1983 | CENT | 40% OFF CENTER 10:00 | | BU | MB | \$12.00 |
| 471 | 1983 | CENT | 45% OFF CENTER 8:00 | | BU | MB | \$9.00 |
| * 472 | 1984 | CENT | 50% OFF CENTER 8:00 | | UNC | MB | \$12.00 |
| 473 | 1984 | CENT | 50% OFF CENTER 8:00 | | UNC | MB | \$10.00 |
| 474 | 198(5) | CENT | 10% OFF CENTER 4:00 | | UNC | MB | \$1.50 |
| 475 | 1985 | CENT | 8% OFF CENTER 4:00 STAIN EDGE NBEAR DATE | | UNC | MB | \$1.50 |
| 476 | 1985 | CENT | 8% OFF CENTER 4:00 STAIN ALONG EDGE 6-11:00 | | UNC | MB | \$1.50 |
| 477 | 1985 | CENT | 8% OFF CENTER 4:00 | | UNC | MB | \$1.50 |
| 478 | 198(5) | CENT | 10% OFF CENTER 4:00 | | BU | MB | \$4.00 |
| 479 | 2003 | CENT | 5% OFF CENTER MISSING DETAILS REVERSE | | BU | MB | \$5.00 |
| * 480 | 2007 D | CENT | 15% OFF CENTER 4:00 RED | | BU | MB | \$125.00 |

| | | | | | | | |
|-----|--------|---------|--|--|------|----|----------|
| 481 | N.D. | CENT | 45% OFF CENTER 1:30 | ZINC | BU | MB | \$3.00 |
| 482 | N.D. | CENT | 50% OFF CENTER 1:30 | COPPER | UNC | MB | \$3.50 |
| 483 | N.D. | CENT | 50% OFF CENTER 4:00 | ZINC | BU | MB | \$3.50 |
| 484 | N.D. | CENT | 55% OFF CENTER 1:00 | ZINC | BU | MB | \$3.00 |
| 485 | N.D. | CENT | 60% OFF CENTER 1:00 | ZINC | BU | MB | \$3.00 |
| 486 | N.D. | CENT | 80% OFF CENTER 1:00 | ZINC | BU | MB | \$2.50 |
| 487 | 1972 | CENT | DOUBLED DIE TYPE 2 | DDO #2 FS #102 V STRONG | UNC | MB | \$10.00 |
| 488 | 1972 | CENT | DOUBLED DIE TYPE 3 | DDO 33 FS #108 V STRONG | BU | MB | \$12.00 |
| 489 | 1972 | CENT | DOUBLED DIE OBVERSE | FS #107AU | AU | MB | \$5.00 |
| 490 | 1972 | CENT | DOUBLED DIE OBVERSE | FS #108 VERY STRONG | BU | MB | \$12.00 |
| 491 | 1983 | CENT | BROADSTRIKE | | BU | MB | \$3.00 |
| 492 | 1983 | CENT | UNCENTERED BROADSTRIKE | | BU | MB | \$3.00 |
| 493 | 1987 | CENT | CENTERED BROADSTRIKE | ALMOST NICKEL SIZE | BU | MB | \$4.00 |
| 494 | 1989 | CENT | CENTERED BROADSTRIKE | | BU | MB | \$3.00 |
| 495 | 1982 | CENT | LGE DATE COP, SLIGHTLY UNCENTERED | BROADSTRIKE + 5% INDENT 3:00 | AU | MB | \$2.50 |
| 496 | N.D. | CENT | COPPER TYPE 2 PLANCHET | | UNC | MB | \$0.50 |
| 497 | 1972 | CENT | UNCENT BROADSTRIKE | LOOKS OFF CENTER | UNC | MB | \$6.00 |
| * | 498 | 1948 | OTHER | ARGENTINA 10c, 15% OFF CENTER ++ CRACK THRU PLANCHET 1:30 HALF WAY ACROSS COIN | AU | MB | \$45.00 |
| * | 499 | 1948 | OTHER | ARGENTINA 5c, 15% OFF CENTER 2:00 | AU | MB | \$32.00 |
| 500 | 1828 | OTHER | BRAZIL 40, 15% OFF CENTER 8:00, DOLLAR SIZE | COPPER | EF | MB | \$45.00 |
| 501 | 1969 | DOLL | CANADA, SOME WATER LINES MISSING FRONT OF | CANOE | UNC | MB | \$2.50 |
| 502 | 1974 | OTHER | COLUMBIA 10c, STRONG DOUBLED DIE OBVERSE | SD-I-O-V | UNC | MB | \$3.50 |
| 503 | 1950 F | OTHER | GERMANY 5 PF, PARTIAL FILLED DIE OVER "EN" | 6:30 | AU | MB | \$0.50 |
| 504 | 1898 | OTHER | GRT BRIT PENNY, CUD 1:30 AT END OF TRIDENT | | VG | MB | \$4.50 |
| * | 505 | N.D. | OTHER | INDIA RUPEE, MIRROR BROCKAGE OF YOUNG QUEEN, HOLED AT TOP | VF | MB | \$45.00 |
| * | 506 | 1999 | OTHER | INDIA 50 PAISA, DOUBLE STRUCK ON 25 PAISA PLANCHET, 2ND STRIKE 75% O/C 2:00 UNIFACE WOWER DOUBLE ERROR | BU | MB | \$150.00 |
| 507 | N.D. | OTHER | JAPAN 5 SEN, LAMINATIONS BOTH SIDES | ALUMINUM | FN | MB | \$1.00 |
| 508 | 1957 | OTHER | LUXEMBOURG 1 FRANC, DIE BREAK FILLED | BOTTOM OF 8 | AU | MB | \$1.00 |
| 509 | 1975 | OTHER | MEXICO 5c, DOUBLED DIE 1-R-III + RPM ROUND O/ | POINTED OVAL O | BU | MB | \$4.00 |
| 510 | 1975 | OTHER | MEXICO PESO, WITH STRONG 5% MISALIGED DIE | WITH VERY HIGH RIM 11:00 TO 3:00 | BU | MB | \$2.50 |
| * | 511 | 1821 | OTHER | NETHERLANDS EAST INDIES 1/2 STIVER, DOUBLE STRUCK, 2ND 40% AT 12:00 CLEANED LONG AGO | VF | MB | \$39.00 |
| * | 512 | 1961 | OTHER | PANAMA CENT, STRAIGHT CLIP 10:30 TO 1:30 | UNC | MB | \$4.50 |
| 513 | 1970 | OTHER | PANAMA 5c, 5% STRAIGHT CLIP 8:00 | | AU | MB | \$3.00 |
| 514 | 1970 | OTHER | PANAMA 5c, 7% CURVED CLIP 10:00 | | UNC | MB | \$3.00 |
| 515 | 1966 | OTHER | PANAMA CENT STRAIGHT CLIP 3:00 TO 4:30 | | AU | MB | \$1.00 |
| * | 516 | 292-304 | OTHER | WESTERN USATRAPAS VISVAENAM, FULL MIRROR BROCKAGE | FN | MB | \$45.00 |
| 517 | ASST | OTHER | 10 FORIEN COINS FROM 10 DIFFERENT COUNTRIES WITH MINOR ERRORS IN 2X2 IDENTIFIED | | ASST | MB | \$5.00 |
| 518 | N.D. | OTHER | PHILIPPINES 10c, DIE USED AT SAN FRANCISCO TO MAKE COINS DEFACED WITH PILIPI SHOWING | | FIN | MB | \$9.50 |
| 519 | N.D. | OTHER | PHILIPPINES 20c, AS ABOVE DEFACED BUT SHOWS SEVERAL LETTERS AND PART OF SHIELD | | FIN | MB | \$9.50 |
| 520 | N.D. | OTHER | PHILIPPINES 10c, DIE AS ABOVE DEFACED WITH PART OF SHEIL CENTER | | FN | MB | \$9.50 |

| | | | | | |
|------------|-------|--|------|----|----------|
| 521 N.D. | OTHER | CANTON CITY LINES BUS TOKEN WITH CENTER HOLES MISPUNCHED | EF | MB | \$5.00 |
| 522 1994 | OTHER | 1 OZ SILVER ROUND, "MERRY CHRISTMAS 1994" WITH CAROLLERS 5% CURVED CLIP 10:00 | BU | MB | \$35.00 |
| 523 (1796) | DOLL | "COPY" DOLLAR WITH LARGE LAMINATION FLAP ACROSS HEAD TO END OF HAIR FROM 1:00 90% SILVER | BU | MB | \$29.00 |
| 524 (1796) | HALF | "COPY" HALF DOLLAR DOUBLE STRUCK 2ND 5% OFF CENTER 9:00 90% SILVER | BU | MB | \$19.00 |
| * 525 1998 | OTHER | GREAT BRITAIN 20 PENCE STRUCK ON 5 PENCE PLANCHET PCGS NEAT! | MS62 | MB | \$125.00 |



37



61

GOOD LUCK!